

National Grocery Chain Unicru Kiosks in Stores

Project Overview:

Customer Industry: Grocery
Project Name: Unicru Kiosk
Project Rollout Timeframe: 2 Months
Project Size: 101 Stores

Customer Business Requirement:

Customer was revising their Human Resources function with an implementation of Unicru software accessible via self-service kiosks. Each kiosk required a data connection and non-dedicated power access. The project required a site survey, deployment project management and installations at all 101 locations.

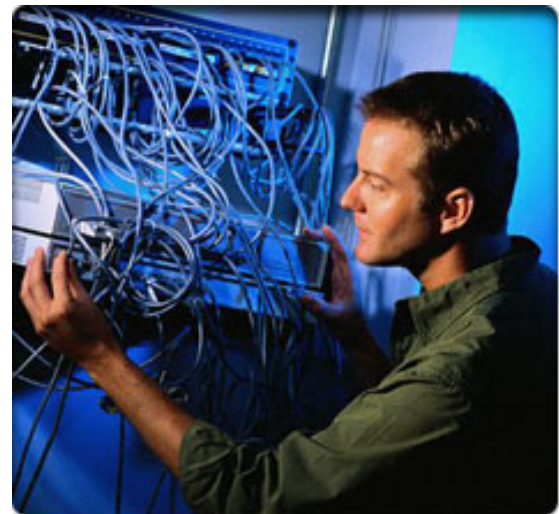
Bailiwick Differentiator:

This client understands the benefits that a professional project management team can bring to a multi-site project. Bailiwick's Services Group provided the client with superior management of all tasks, resources, and timeframes throughout the duration of the project. Bailiwick teams surveyed the kiosk locations, assessed the work required and reported this to the client. This information was used to develop a rollout schedule that kept technical resource expenses to a minimum by effectively staffing installation technicians with the appropriate level of technical expertise, thereby saving the client money.

Project Services Overview:

Pre-Installation Tasks

Site surveys were conducted at each store location to review data and high voltage requirements. The deployment was a coordinated effort between the store manager, the store's traffic pattern, Bailiwick Field Resources and the desired project turn-up dates.



Installation Tasks

Bailiwick deployed local field technicians to install two Cat5e cable runs from the communications room to the desired Kiosk location. The cabling was tested for compliance with Cat 5e standards.

In addition to low voltage cabling, the Bailiwick Project management team coordinated the installation of a 20 Amp Dedicated Circuit. Bailiwick used a partner network of IBEW union electricians to install one 20 Amp dedicated circuit from the existing

breaker panel to the desired Kiosk location. Electricians made sure the installation was cosmetically consistent with previous electrical installations. (i.e. painting conduit) Unique cosmetic requirements were handled via the change management process.

Acceptance and Completion

Bailiwick completed thorough sign-off documentation with the site contact and collected digital pictures of the new cable infrastructure and network closet.

Customer Contacts:

If you have a question about a specific project, please call Bailiwick for more information. We will be happy to provide you with references and more details.

Bailiwick Data Systems 1-800-935-8840

